

TIME 45 min.

20 points

**Task 1**

On the map (Fig. 1), draw the path you followed from T1 to T2.

(4 pts)

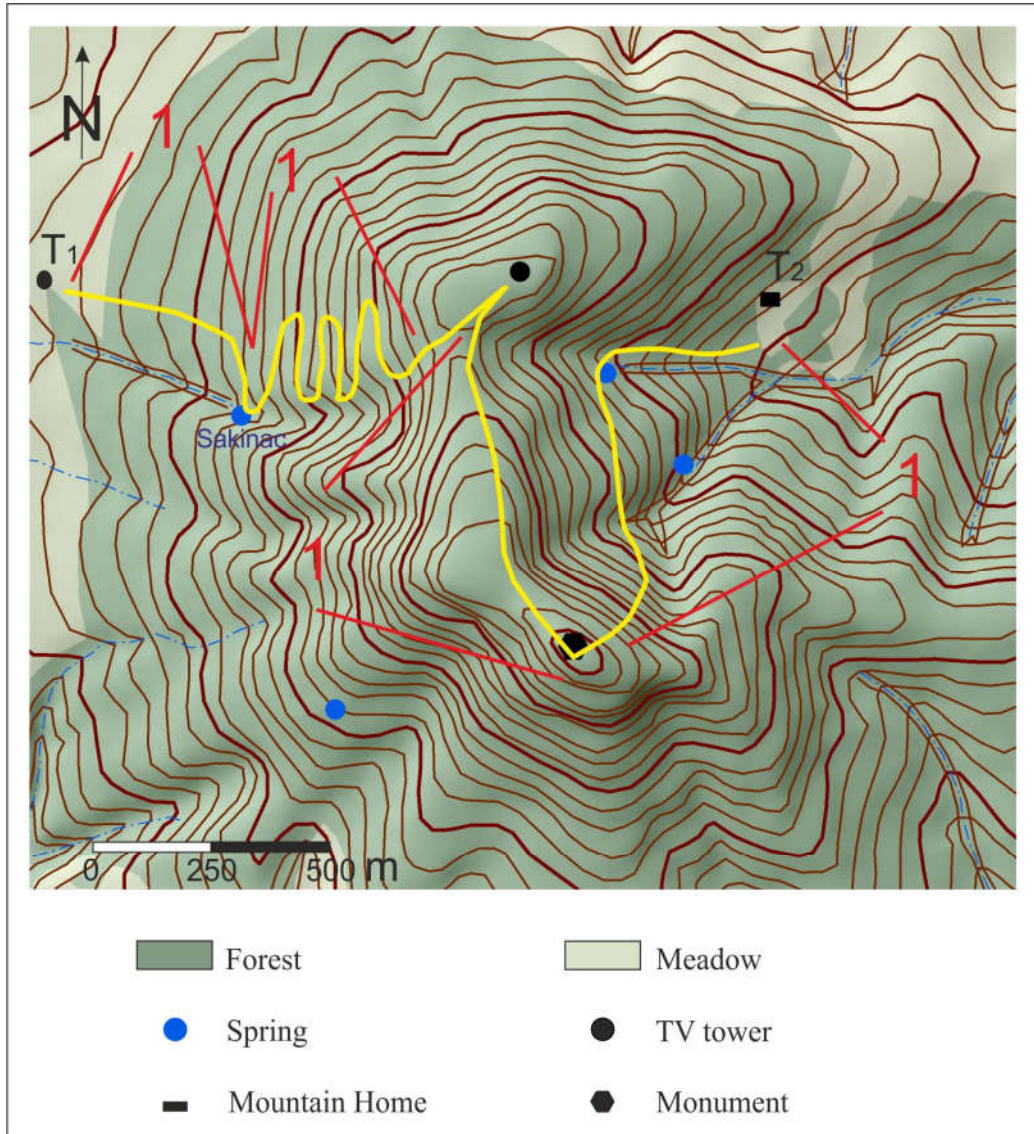


Fig. 1 - the Map of Avala Mountain

**Task 2**

Which landforms are the most prominent in Avala and how were they formed?

- gully/brook/raven (2 pts); channel by creeks/tranches by springs (1 pts)

- Made by torrent flow/flash flood/made after heavy rain (2 pts); by river erosion (1 pts)

(5 pts)

### **Task 3**

What technical measures prevented the occurrence of natural disasters in Avala? How do these technical measures work?

- Dams/barriers/walls/obstacles (2 pts) / channel (2 pts)
- Preventing torrent flow and retain mud, sand and gravel (2 pts) / preventing landslide (2 pts)

*(6 pts)*

### **Task 4**

What are the tourist values of Avala? List at least 5.

1. Tv tower or Avala tower
2. Monument of unknown soldier
3. Sakinac spring
4. Touristic complex near Tv tower (Ethno house, church, sport fields)
5. Mountain house
6. Hotel near monument
7. Biodiversity

*(5 pts)*