

Task 1 (3 points)

Southernmost border of boreal coniferous forests areal in Europe; Climate change; Anthropogenic influence (pollution, lowering of the underground water level, etc.); Strengthening of pathogenic organisms, etc.

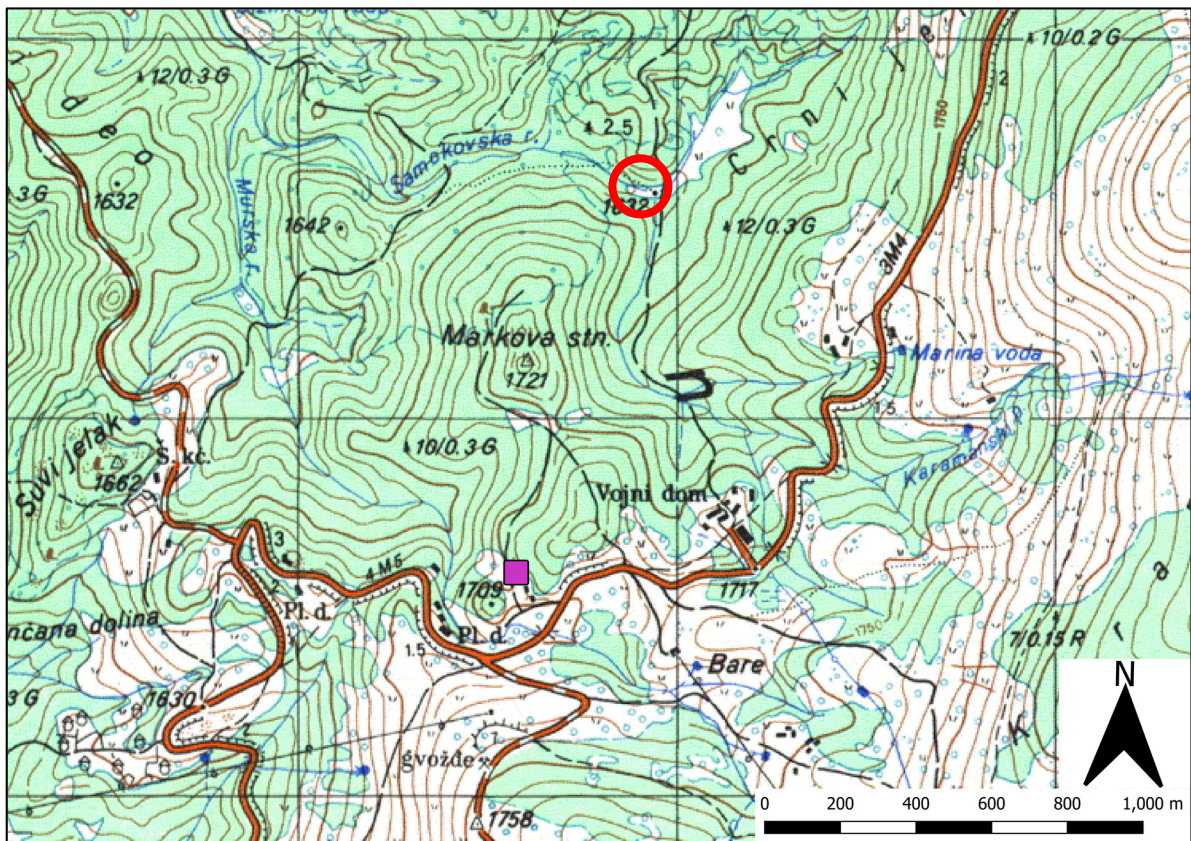
Task 2 (2 points)

Selective erosion and similar acceptable answers.

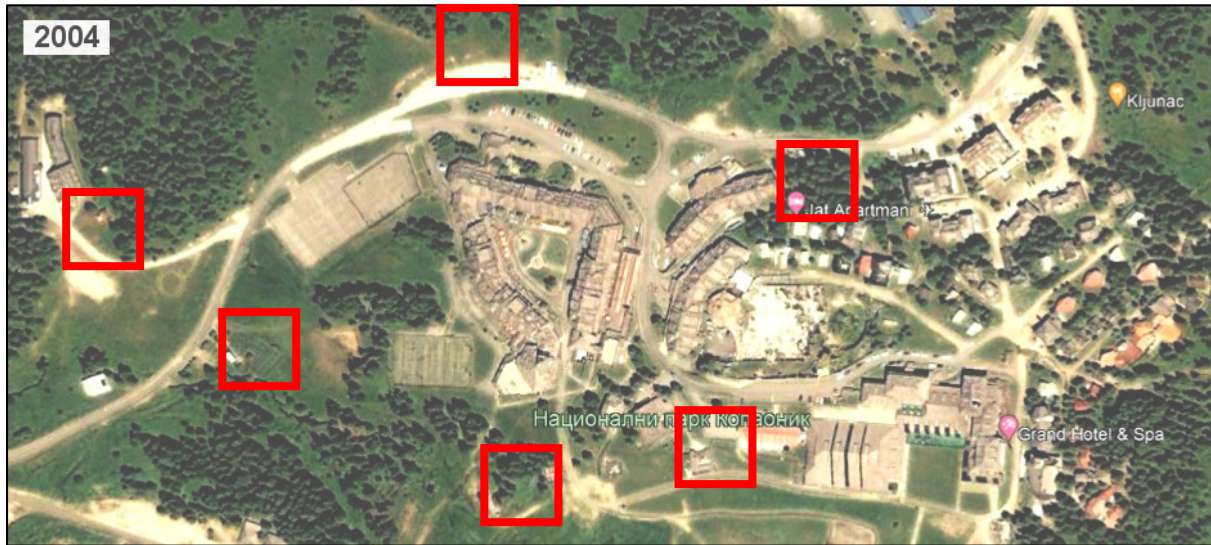
Task 3 (2 points)

560 m (Close results are accepted)

Task 4 (3 points)



Task 5 (3 points)



And other acceptable locations

Task 6 (9 points)

Ski track	Vertical distance [m]	Length [m]
A	340	1462
B	170	644
C	110	455

Close results for length are accepted

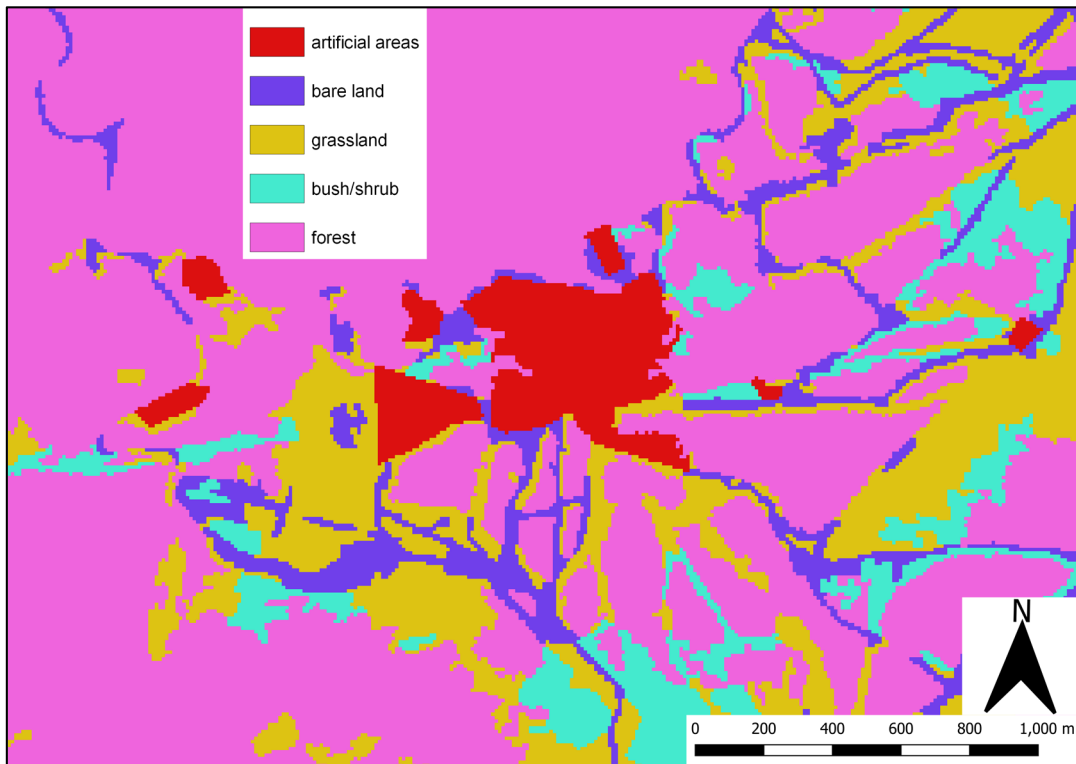
Task 7 (3 points)

Excessive tourism development and construction etc.

Task 8 (5 points)

Air, water, soil pollution; Lowering of the underground water level; Excessive noise; Waste water problems; Endangerment of mountain ecosystems; Deforestation; Excessive use of resources, etc.

Task 9 (5 points)



Task 10 (5 points)

Parameters	Year
Temperature [°C]	4.2
Precipitation [mm]	1040.1
Days with snowfall	91.6
Days with snow cover	151.9
Frost days	162.4